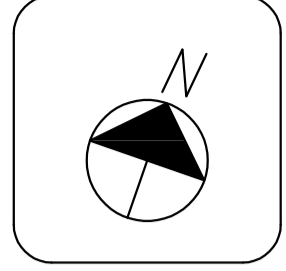
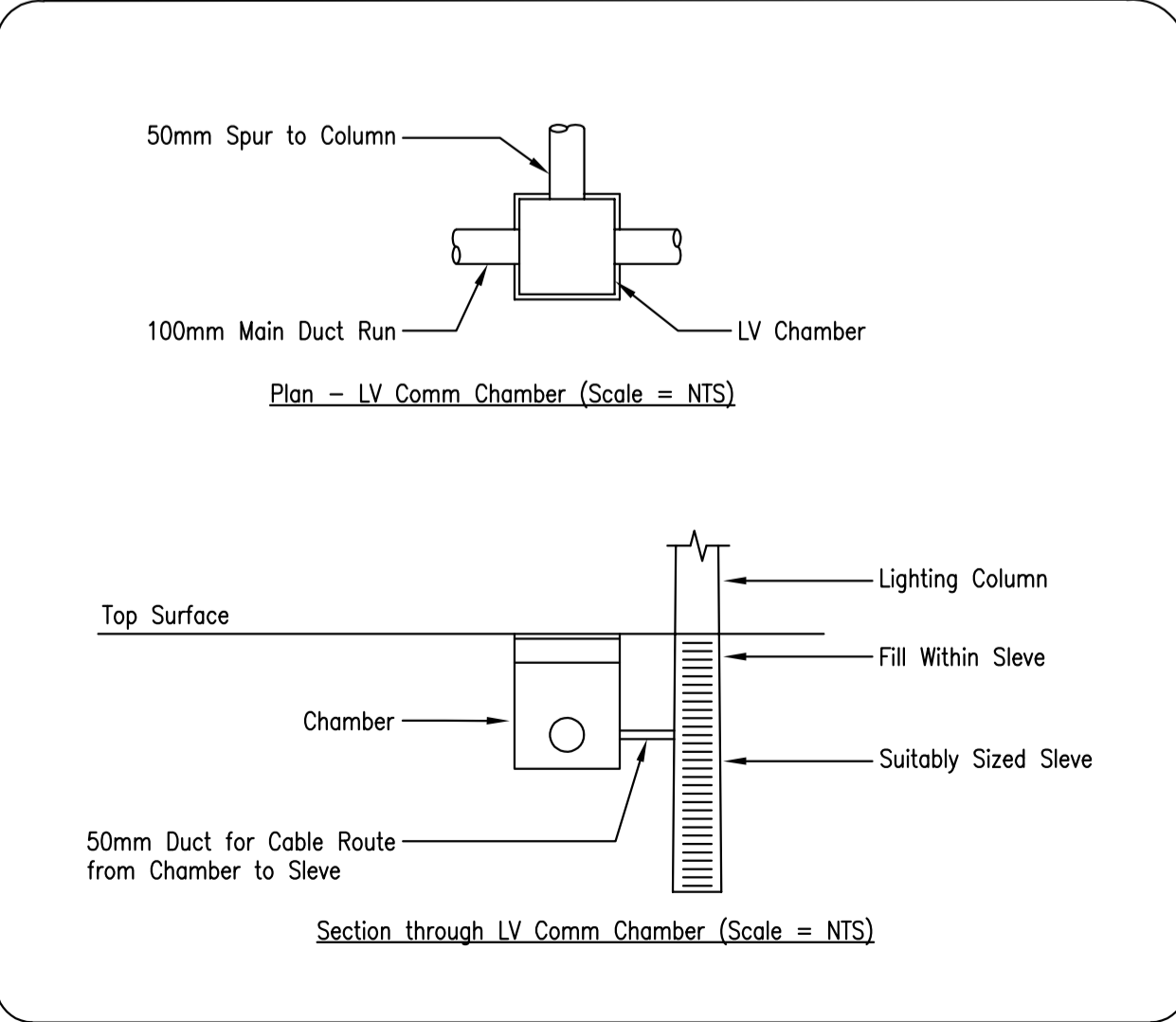
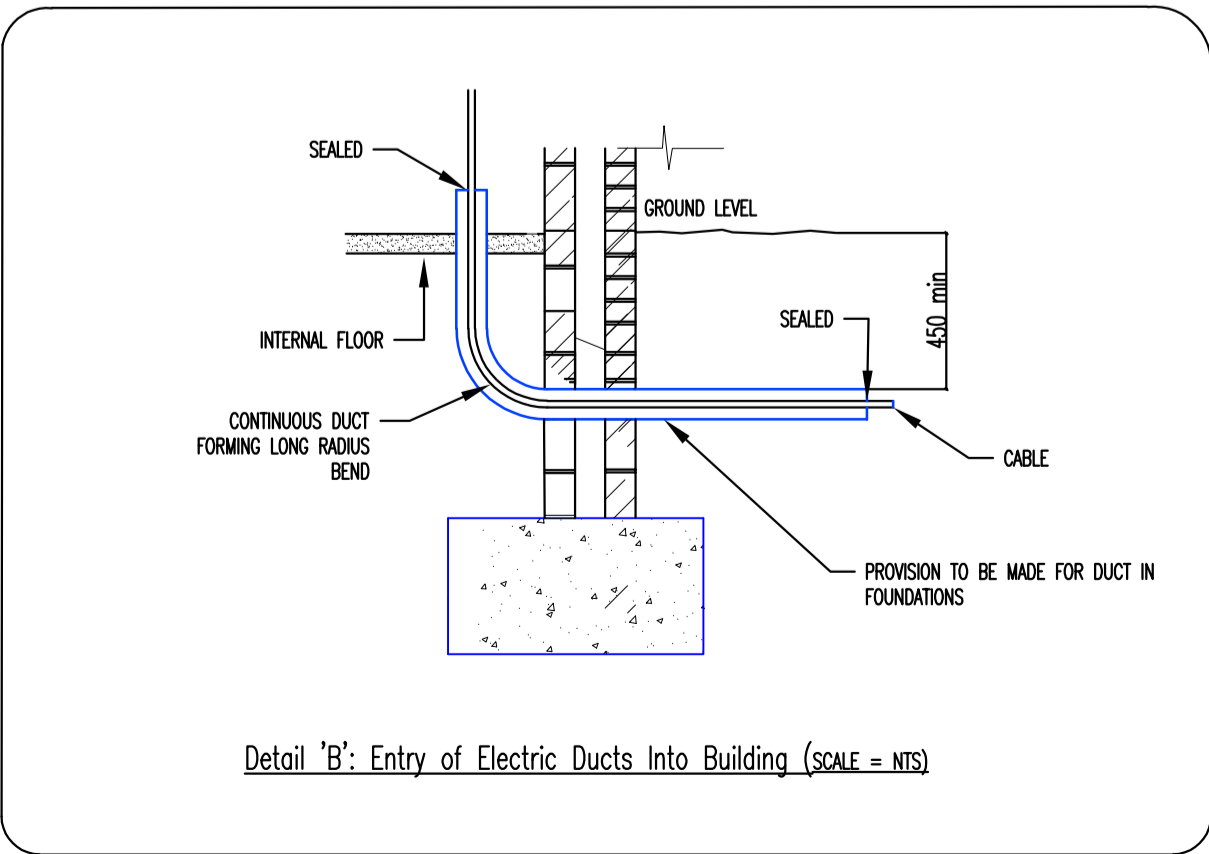
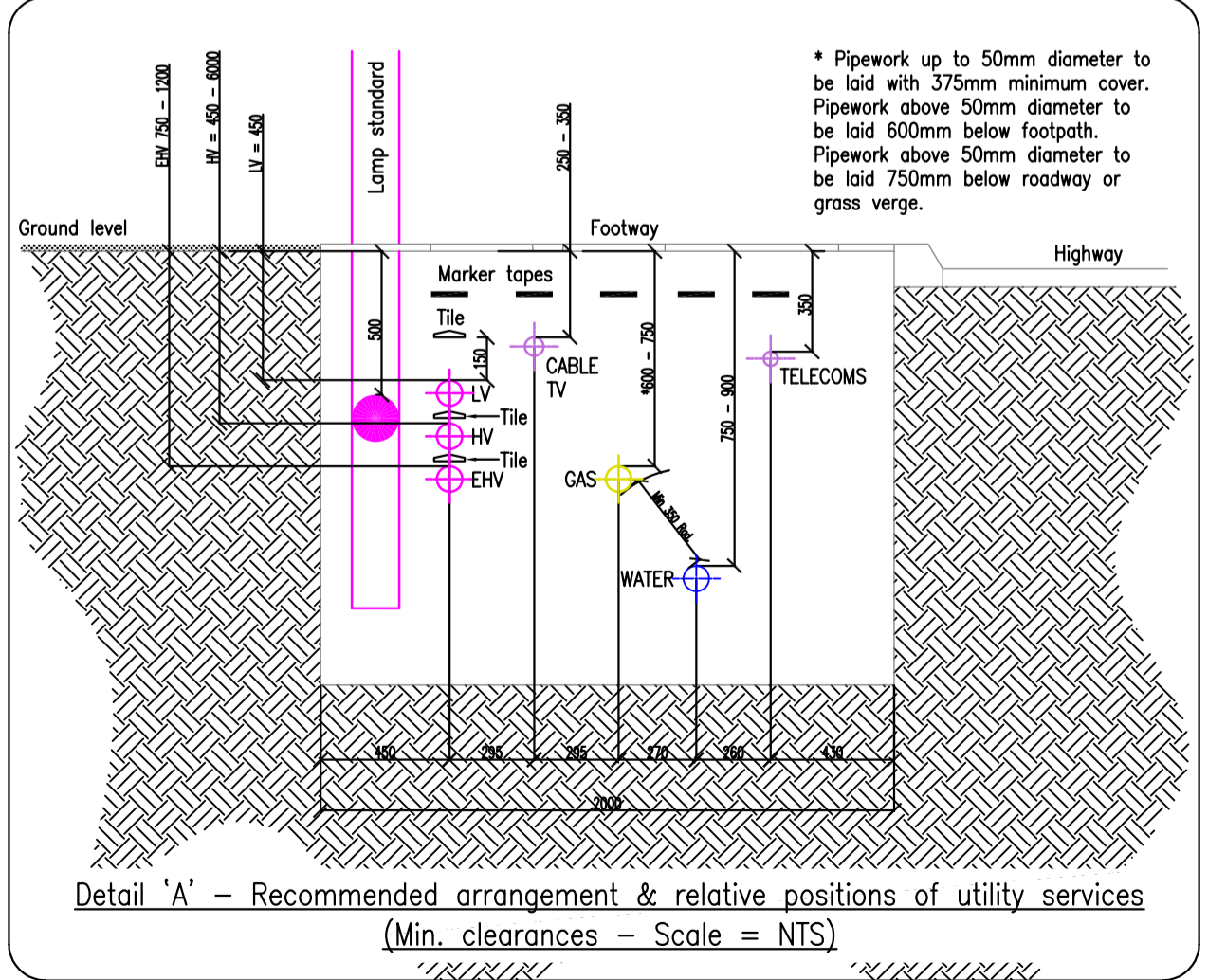
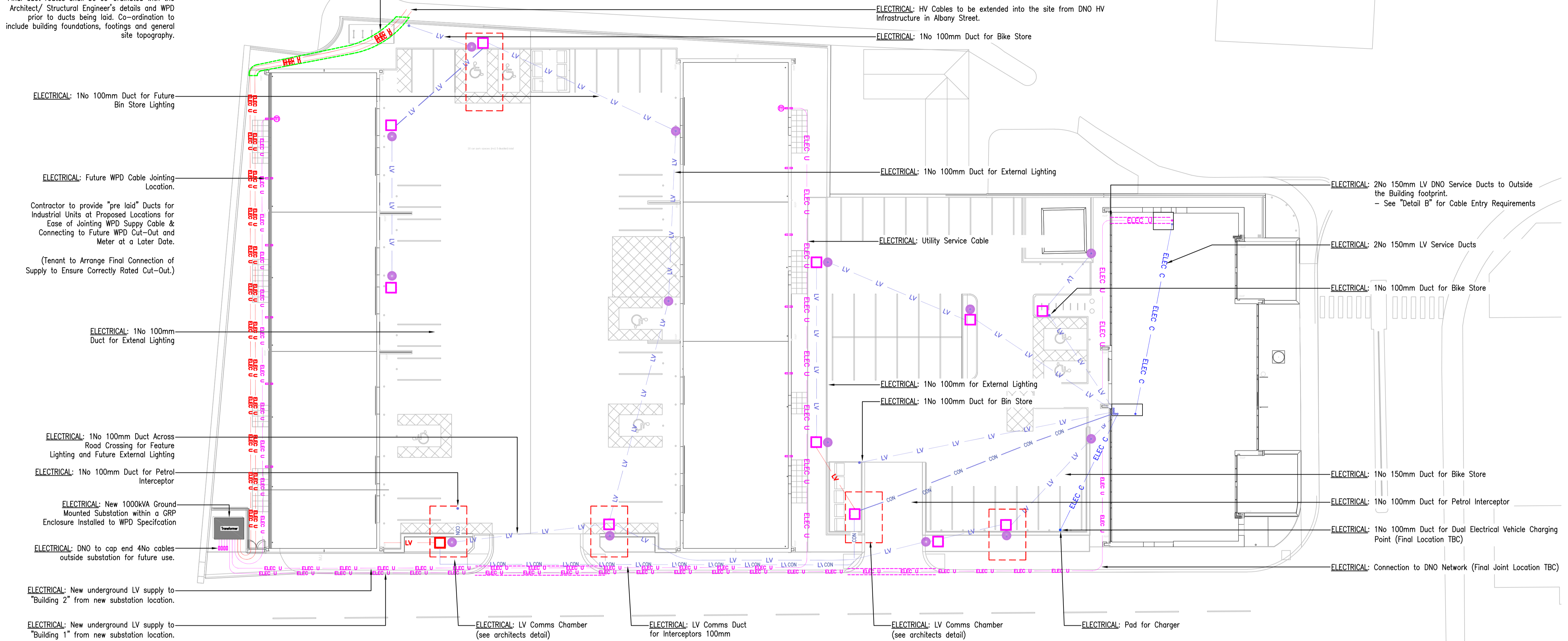


**ELECTRICAL:**  
 DNO HV cables to be installed within 2No 150mm BLACK ridgi ducts and to run through the Dockyard wall at no more than 600mm below ground level (Green dashed line indicates extent of ducted HV cabling).

Final duct routes shall be co-ordinated with the Architect/ Structural Engineer's details and WPD prior to ducts being laid. Co-ordination to include building foundations, footings and general site topography.



- Legend:**
- LV — Electrical Low Voltage (LV) underground cable for external lighting.
  - ELEC U — Electrical main below ground by UIP
  - ELEC U — HV Electrical cables below ground by UIP
  - ELEC C — Electrical service below ground by Services Contractor
  - CON — Controls Cabling for Petrol Interceptor
  - ELV — ELV - Inceptor Control Cabling
  - External Lighting Column
  - ⊕ Electrical Utility Meter
  - Cable Draw Pit - External Lighting
  - ⊕ #150mm Ducts to be "Pre-Laid" for Future Provision
  - UIP HV Cabling installed within BLACK ridgi ducts



This drawing shall be used for its intended purpose only. Copyright Reserved.

**EX2 ELECTRICAL** EX2 Electrical (South West) Ltd  
 Basepoint Business Centre,  
 Yeoford Way, Matford,  
 Exeter. EX2 8LB  
 Phone: 01392 308570

CLIENT: **MIDAS**

PROJECT: **OCEANS GATE**

SCALE: **1:200@A1** DRAWN BY: **TJF**

DATE: **NOV 2017** CHECKED: **MB**

DRAWING TITLE: **EXTERNAL SERVICES**

DRAWING NUMBER: **EX292-E-400** REVISION

**AS INSTALLED**